

oakheart

£240,000

Asking Price

Hill Court, Victoria Road

Welcome to this nearly new apartment located in the desirable Hill Court on Victoria Road. This modern property, built in 2020, offers a comfortable living space of 550 square feet, making it an ideal choice for individuals or couples seeking a stylish home in a central location.

The apartment features a well-appointed reception room that provides a welcoming atmosphere, perfect for relaxation or entertaining guests. The single bedroom is thoughtfully designed

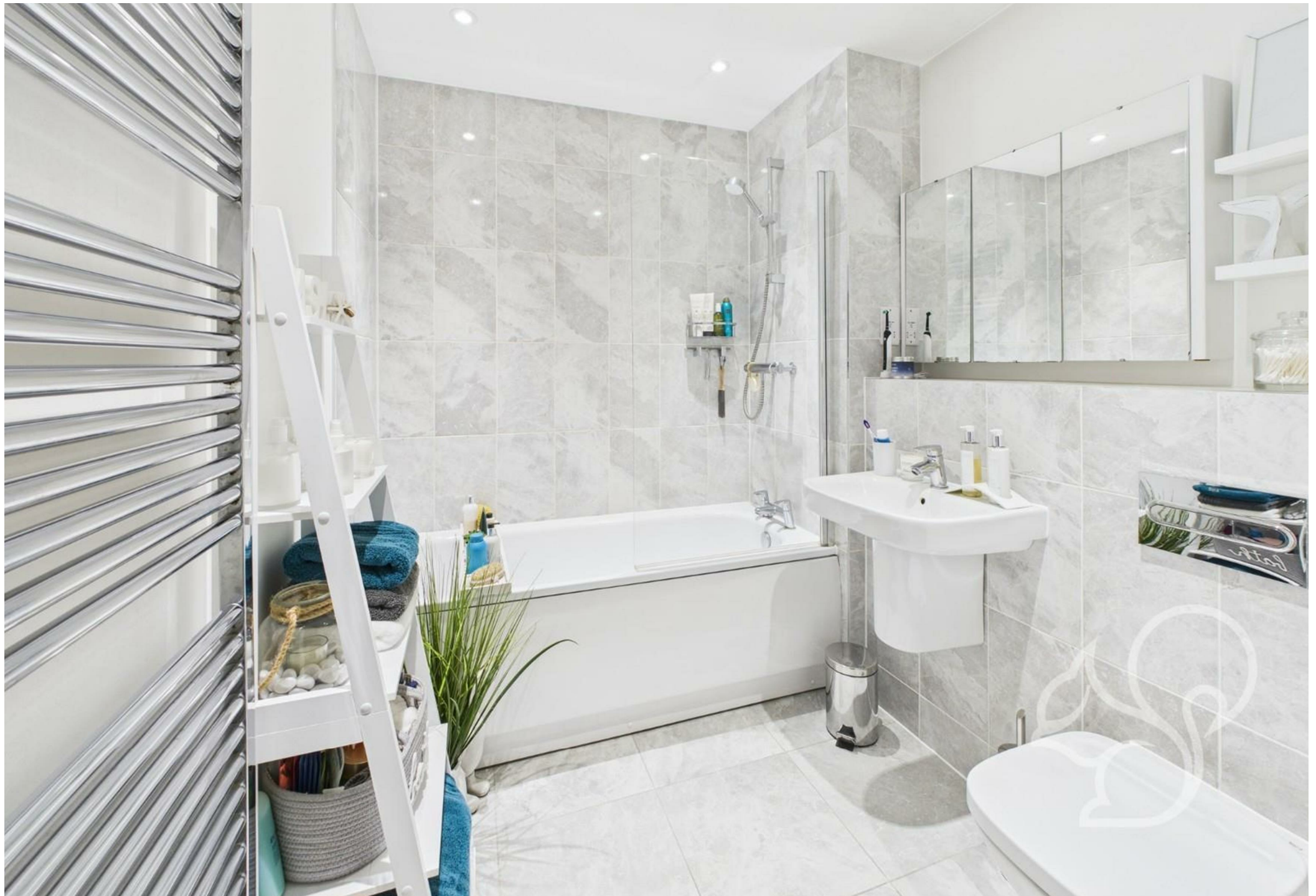
to maximise space and comfort, while the bathroom is equipped with contemporary fixtures, ensuring a pleasant experience.

The central location means you are just a stone's throw away from the vibrant city centre, where you can enjoy a variety of shops, restaurants, and leisure activities. Additionally, the easy access to Chelmsford mainline station makes commuting a breeze, connecting you to London and beyond.

This apartment is not only modern in design but also offers the practicality and convenience that today's lifestyle demands. Whether you are a first-time buyer or looking to invest, this property presents an excellent opportunity to own a piece of contemporary living in a prime location. Do not miss the chance to make this delightful apartment your new home.





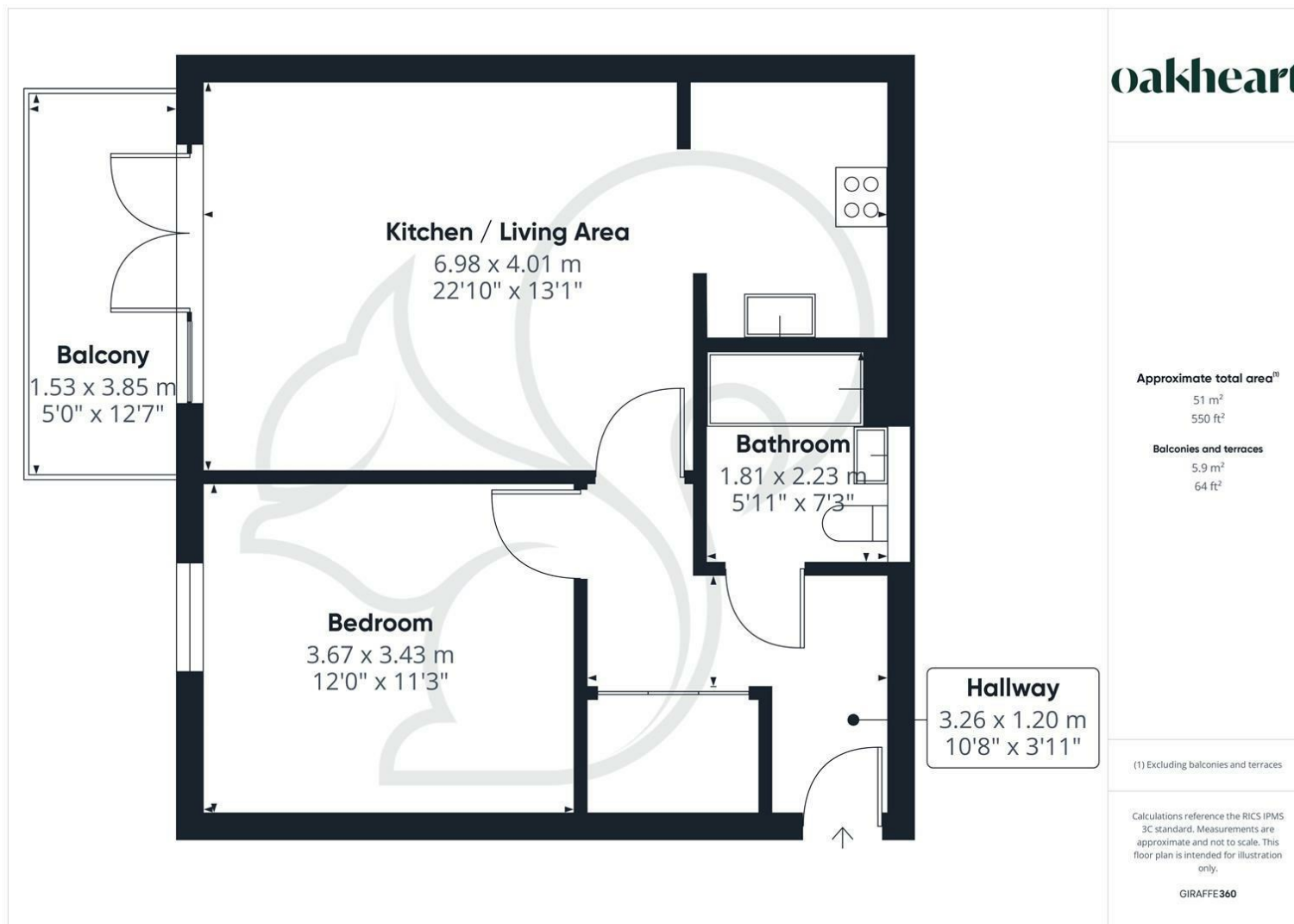












Local Authority:  
Chelmsford City Council

Tenure:  
Leasehold

Council Tax Band:  
C

### Energy Efficiency Rating

	Current	Potential
Very energy efficient - lower running costs		
(92 plus) <b>A</b>		
(81-91) <b>B</b>	<b>83</b>	<b>83</b>
(69-80) <b>C</b>		
(55-68) <b>D</b>		
(39-54) <b>E</b>		
(21-38) <b>F</b>		
(1-20) <b>G</b>		
Not energy efficient - higher running costs		
<b>England &amp; Wales</b>	EU Directive 2002/91/EC	

Agents Note: Whilst every care has been taken to prepare these particulars, they are for guidance purposes only. All measurements are approximate and are for general guidance purposes only and whilst every care has been taken to ensure their accuracy, they should not be relied upon.

Oakheart Chelmsford  
01245 800181  
chelmsford@oakheart.co.uk  
20 Victoria Road, Chelmsford, Essex, CM1 1PA

**oakheart**